



ISC40G(S) with External Temperature Sensor

Insatech has designed an EHEDG certified termowell solution for the ISC40G(S) conductivity sensor.

XT4ISC40

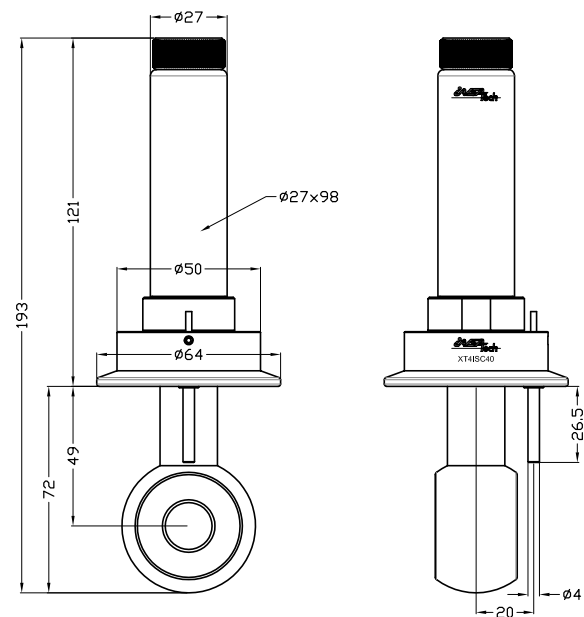
External Temperature Sensor

To get a more stable and faster reacting temperature reading, Insatech has designed a small solution with a termowell welded to the clamp. This ensures that the temperature sensor is placed close to the conductivity measurement without influencing the measurement.

Why use an external temperature sensor?

Inductive conductivity is designed to measure conductivity in higher conductivity ranges. Because of this, the body of the sensor is cast in PEEK material, but this has an adverse affect on the internal temperature element that will experience a measurement delay. In application where temperature is changing rapidly it's ideal to have an external temperature sensor. Using conductivity measurement as an indication of concentration is highly dependent of a good and fast reacting temperature measurement. By using an external temperature sensor you get:

- Fast reacting temperature reading
- Optimal temperature compensation
- Ease of use during temperature calibration
- Optimized concentration calculation



Model code	Suffix	Option	Description
XT4ISC40			Clamp connection with external temperature sensor for Yokogawa inductive conductivity sensor type ISC40G(S). Ra<0,8 on clamp and temperature well Temperature element: PT1000 Class A.
Mounting on loop	-N -E -FC		New Existing Mounted on Flowcell FC4ISC40
Cable lenght	-3 -5 -10		3 meter 5 meter 10 meter
Clamp size	-2 -2.5 -3 -X		2" clamp 2.5" clamp 3" clamp Special
Material	-S -X		SS 316L 1.4435 Special
O-ring	-E -X		EPDM, FDA compliant Special
Certificate		/3.1 /EHEDG	3.1 material certificate EHEDG approved

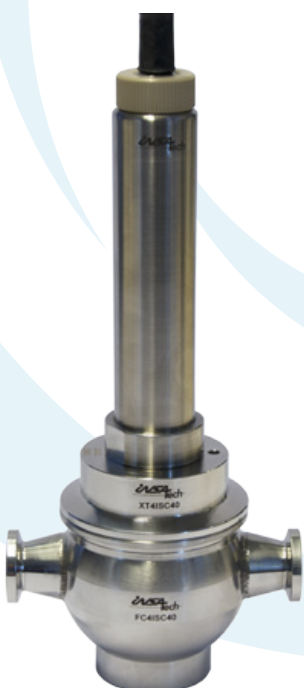
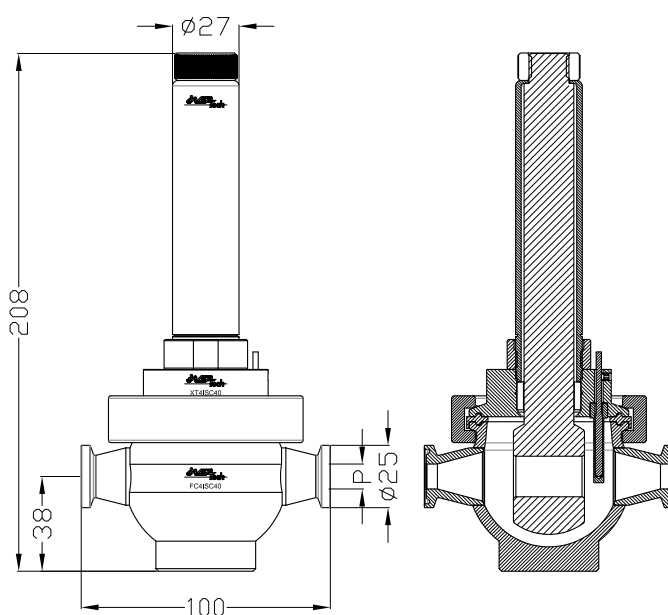


FC4ISC40

Flow Fitting for Yokogawa ISC40G(S)

Special flow fitting for small pipes

In applications where there is a need to measure a high conductivity in small pipes, it can be problematic to install an inductive conductivity sensor due to lack of space. This is why Insatech A/S has designed a special flow fitting, which ensures that the sensor can be connected to small diameter pipes. This flow fitting is mounted vertically and is self draining. The fitting can be used in combination with the special clamp with external temperature sensor. The inductive sensor has to be calibrated in the flow fitting to ensure correct conductivity readings.



Model code	Suffix	Option	Description
FC4ISC40			Flowfitting for Yokogawa ISC40G(S) inductive conductivity sensor. Minimized dead volume vertical mounting Sensor: ISC40G(S)-GS/STC1/SFT/XT4ISC40 Surface Roughness: Ra<0,8
Clamp size	-P4 -P6 -P8 -P10 -P12 -P14 -P16		DN6 (hole Ø4mm) DN8 (hole Ø6mm) DN10 (hole Ø8mm) DN12 (hole Ø10mm) DN14 (hole Ø12mm) DN16 (hole Ø14mm) DN18 (hole Ø16mm)
Material		-S -X	SS 316L 1.4435 Special
Certificate		/3.1	3.1 material certificate



Mennesker
Idéer
Løsninger

Insatech A/S
Næstvedvej 73C
4720 Præstø
Denmark

Tel. +45 5537 2095
mail@insatech.com
www.insatech.com

This is a series of information booklets produced by Insatech. Other booklets can be found at www.insatech.com. The folder is printed on FSC-certified paper.

FSC is an international certification scheme for tree and paper. In FSC forests no more trees are utilized than what can be reproduced. FSC is a guarantee of the protection of wildlife and vegetation, and an assurance that forest workers are secured in terms of education, occupational security and salary.

© Insatech A/S
Reproduction of text or excerpts of this is authorized provided the source is acknowledged.